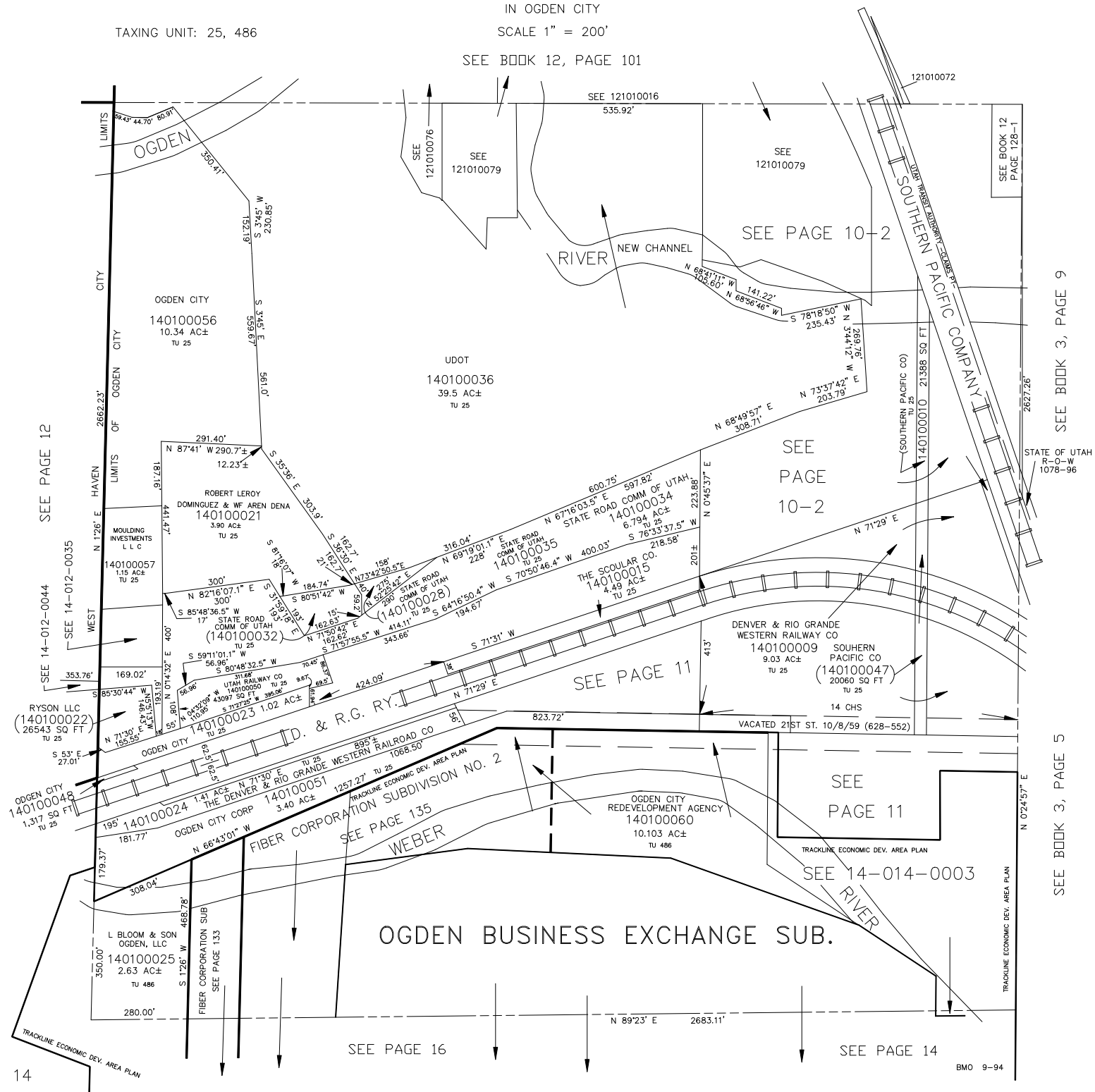


N.E. 1/4  
SECTION 30, T.6N., R.1W., S.L.B. & M.

TAXING UNIT: 25, 486

IN OGDEN CITY  
SCALE 1" = 200'

SEE BOOK 12, PAGE 101



SEE PAGE 12

SEE PAGE 10-2

SEE PAGE 11

SEE PAGE 135

SEE PAGE 14

SEE PAGE 16

SEE BOOK 12 PAGE 128-1

SEE PAGE 10-2

SEE BOOK 3, PAGE 9

SEE PAGE 11

SEE BOOK 3, PAGE 5